



Flight Delay Analysis Dashboard

dev team

Alberto

Ponce

Ryan

Karcaw

Armine

Arutyunyan

Maura

Ellsworth

I A H

george bush intercontinental houston airport



Our problem: flight delays

Flight delays cause:

- Missed connections
- Loss of vacation days
- Unexpected costs such as needing to purchase a new hotel or flight

In 2022 there we accounted for **1,557,771** minutes of delay at IAH...

that's 3 YEARS

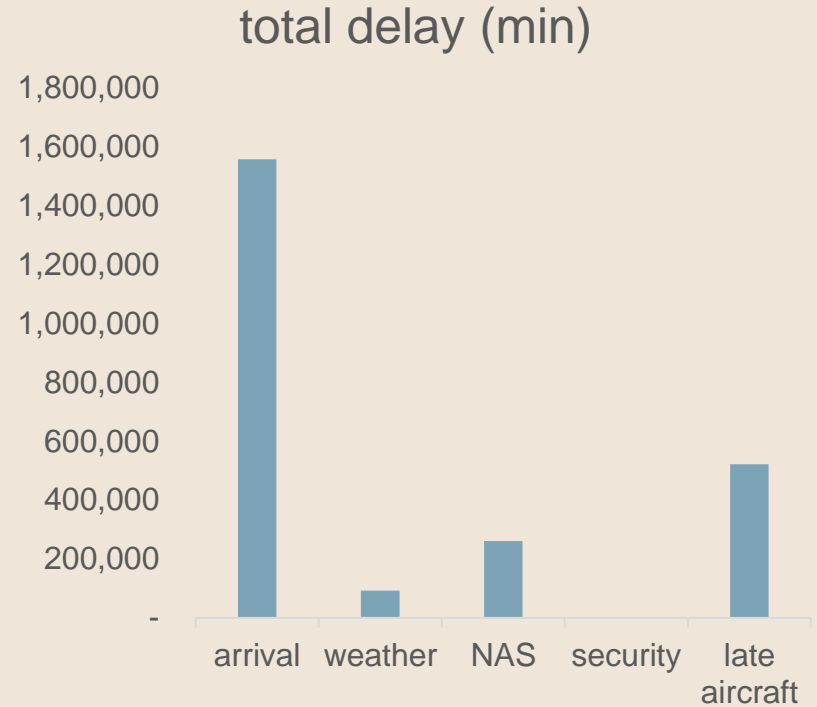
Our project

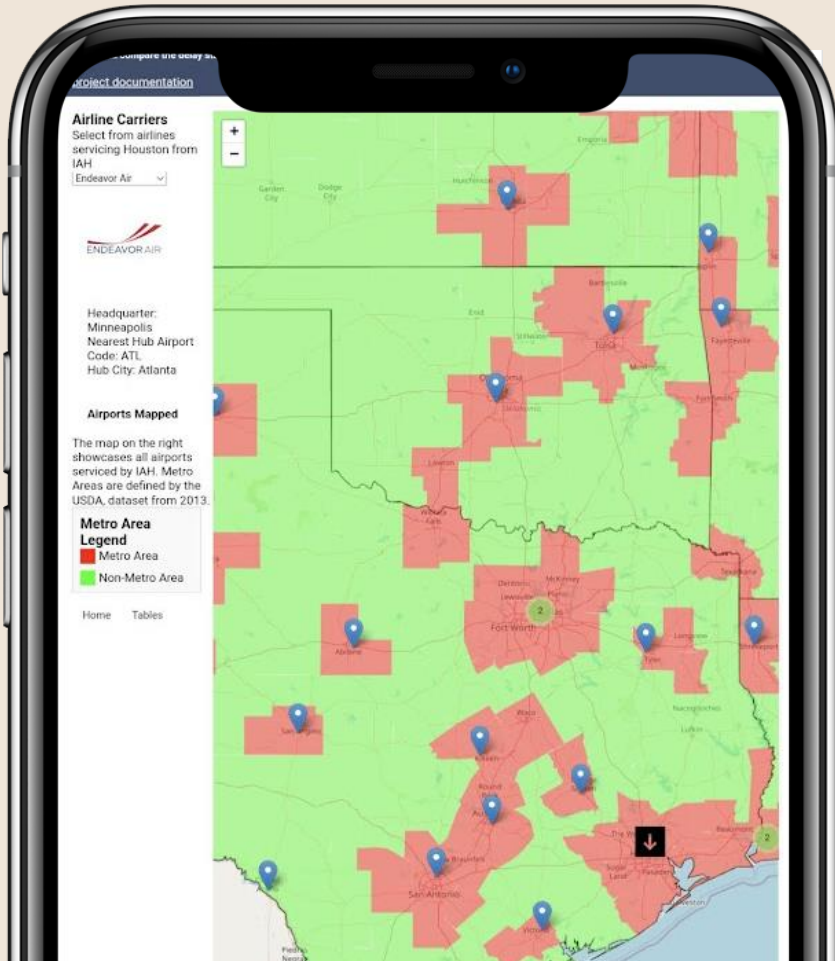
We discovered that there is no great way to figure out how likely your airline is going to be delayed. So we developed a platform that shows statistical information on how likely your flight will be delayed based on airlines.





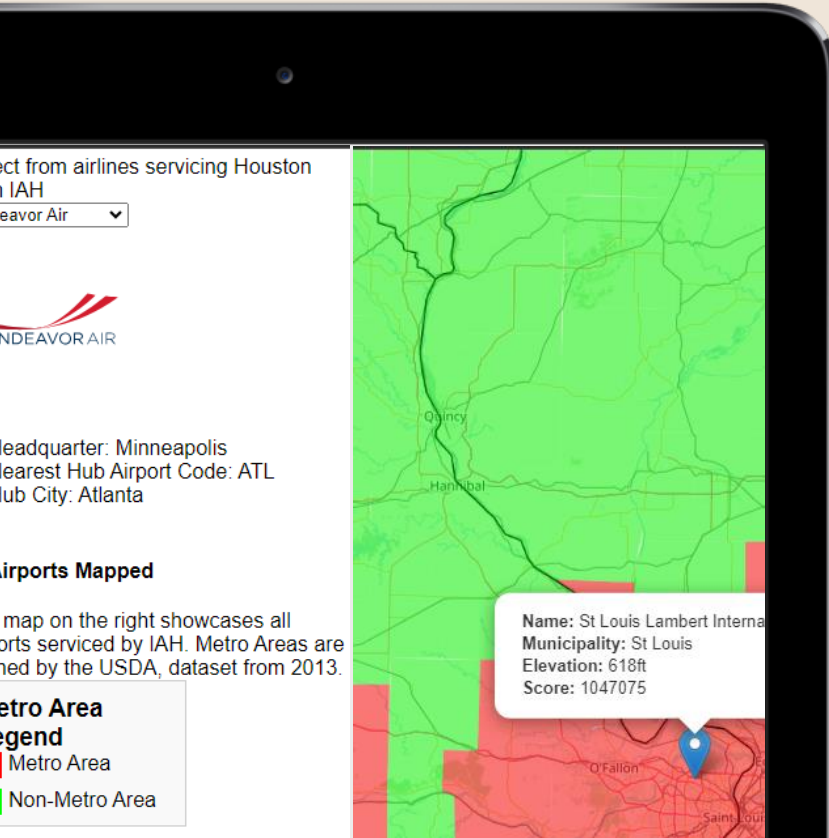
Given that most minutes of delay come from arrival delay, ie. delays caused by causes external to the IAH terminal.





Our product serves as a exploratory, informational tool that provides customers a high-level summary of how their origin/destination might affect the amount of delay.

MAPPING




Given any airline, the user can find information about the airline's hub, headquarters, and information about the airport of origin/destination.

Technology Stack

 HTML5

 JAVASCRIPT

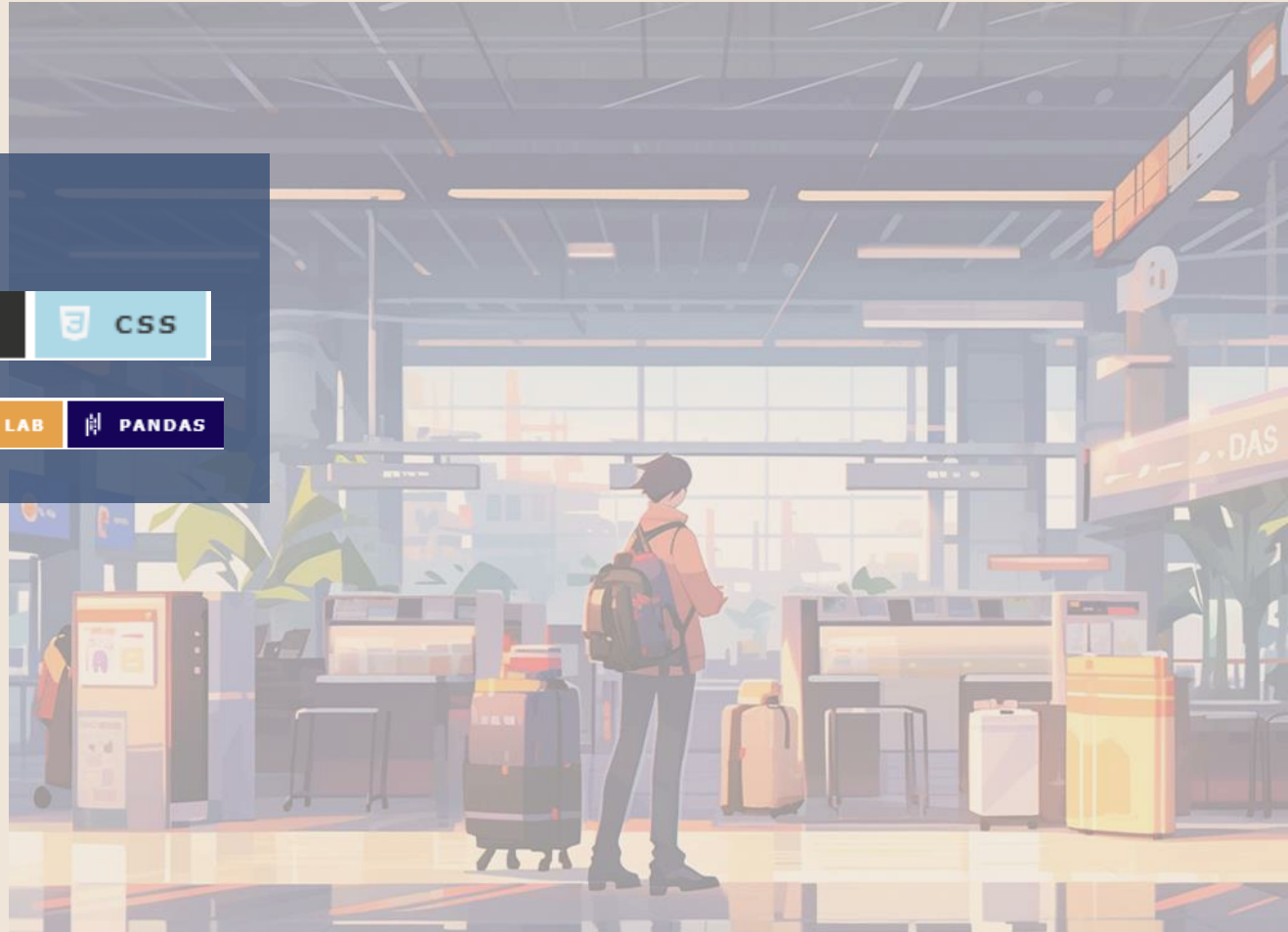
 CSS

 PYTHON

 ANACONDA

 JUPYTER LAB

 PANDAS



documentation

Journal-type entries that document our journey in developing this full-stack application using markdown.



<https://memellsworth.github.io/Project3/journal/project-development-journal-entries.html>



Flight Delay Analysis Dashboard

Thank you!